

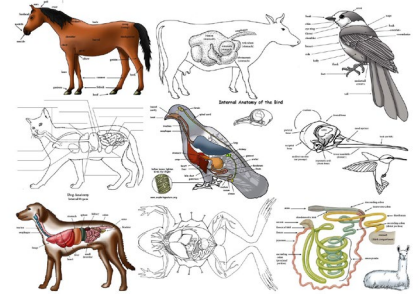
**DEPARTMENT 10 - ANIMAL SCIENCE (and SMALL HOUSE PETS)  
Division A – Animal Science (without Live Animals)**

**RULES:**

1. Open to exhibitors in any Animal Department.
2. For poster exhibits, see Rules & Regulations in the Junior Division.
3. The below exhibits must follow the rules of the appropriate Department (ex: Photography, Woodworking, Cultural Arts etc.)

Premiums: Blue \$1.75 Red \$1.50 White \$1.25 Pink \$1.00

Class No.	Description
101.	Exhibit, Animal training or care
102.	Exhibit, Animal history or breed(s)
103.	Exhibit, Parts of animals or reproduction
104.	Exhibit, Animal health
105.	Exhibit, Animal safety
106.	Exhibit, Animal nutrition
107.	Exhibit, Animal products
108.	Game, Teaches about animals
109.	Exhibit, Careers related to animal project
110.	Scrapbook, Animal project
111.	Exhibit, Built for Animal's Use
112.	Exhibit, Explaining, Educating on animal welfare
113.	Exhibit, On alternatives of animal waste disposal or use
114.	Exhibit, Related to DAIRY project literature
115.	Exhibit, Related to BEEF project literature
116.	Exhibit, Related to SWINE project literature
117.	Exhibit, Related to SHEEP project literature
118.	Exhibit, Related to GOAT project literature
119.	Exhibit, Related to HORSE project literature
120.	Exhibit, Related to POULTRY project literature
121.	Exhibit, Related to RABBIT project literature
122.	Exhibit, Related to DOG project literature
123.	Exhibit, Related to CAT project literature
124.	Exhibit, Related to PET project literature
125.	Farm Module, display of buildings, equipment and animals (max size of 4'x4')
126.	Any other exhibit related to Animal and Veterinary Science



**Division B - Dog Education (no live animals)**

**RULES:**

1. See Poster Regulations under Rules & Regulations, Jr. Division.
2. Exhibits can only be entered in one department.
3. The below exhibits must follow the rules of the appropriate Department. (ex: Photography, Woodworking, etc.)

Premiums: Blue \$1.75 Red \$1.50 White \$1.25 Pink \$1.00

Class No.	Description
101.	Dog Education Poster
102.	Dog Photography, any # of photos taken by exhibitor; dog-related topic, mounted on poster board (11" x 24" max size)
103.	Dog Painting, any dog related topic, must have method for hanging.
104.	Dog Drawing, any dog related topic, pencil, chalk, ink, pastel, or other similar medium. Must have method for hanging.
105.	Dog Woodworking, any item related to the dog project, must have appropriate finish.
106.	Dog Clothing Item, made or sewn by exhibitor
107.	Dog Accessory, made or sewn by exhibitor
108.	Dog Toy, made or sewn by exhibitor
109.	Dog bed or blanket, made or sewn by exhibitor
110.	Homemade nutritious snack for your dog with recipe and explanation of health benefits
111.	Dog Demonstration with summary of demo on index card.
112.	Scrapbook about Dogs
113.	Dog Training Lesson Plan, created by exhibitor
114.	Research Report about dogs, breed or other informative topic.
115.	Dog Health related exhibit (first aid kit, poster, report or demonstration)
116.	Any other exhibit related to Dogs

**Division C – Clothes Horse Judging: Monday, 2:00 PM – 7:00 PM**  
(following Model Horse Show)

**RULES**

1. Open to all exhibitors enrolled in the Horse Project (4-H, FFA, etc.).
2. Articles must be the current and original work of the exhibitor.
3. Articles may be any horse-related item made from fabric. May incorporate leather, metal, adornment, etc. **Any Other Sewn Item** may include items for home décor.
4. All entries must include the following information:
  - Name
  - Age
  - County
  - Class
  - Materials and technique
  - Brief description of intended use/purpose



Premiums: Blue \$1.75 Red \$1.50 White \$1.25 Pink \$1.00

Class No.	Description
101.	Saddle Pad or Stable Blanket
102.	Horse Accessory
103.	Riding Apparel, Any Article
104.	Riding Accessory
105.	Any Other Sewn Item



**Division D – Equine Education Judging: Monday, 2:00 PM – 7:00 PM**  
(following Model Horse Show)

**RULES:**

1. See Poster Regulations under Rules & Regulations, Jr. Division.
2. Exhibits can only be entered in one department.
3. The below exhibits must follow the rules of the appropriate Department. (ex: Photography, Woodworking, Cultural Arts etc.)

EXCEPT Class 103. Class 103 must follow the follow rule: All photos must be 8"x10" and must be mounted on 11"x14" mat board or poster board. Photos may be over-matted, but if over-matted, the must be at least 7.5" x 9.5" oval or rectangular opening.

Premiums: Blue \$1.75 Red \$1.50 White \$1.25 Pink \$1.00

Class No.	Description
101.	Equine Creative Poster
102.	Equine Educational Poster
103.	Equine Photography
104.	Equine Painting
105.	Equine Drawing
106.	Equine Woodworking
107.	Any Other Equine Exhibit